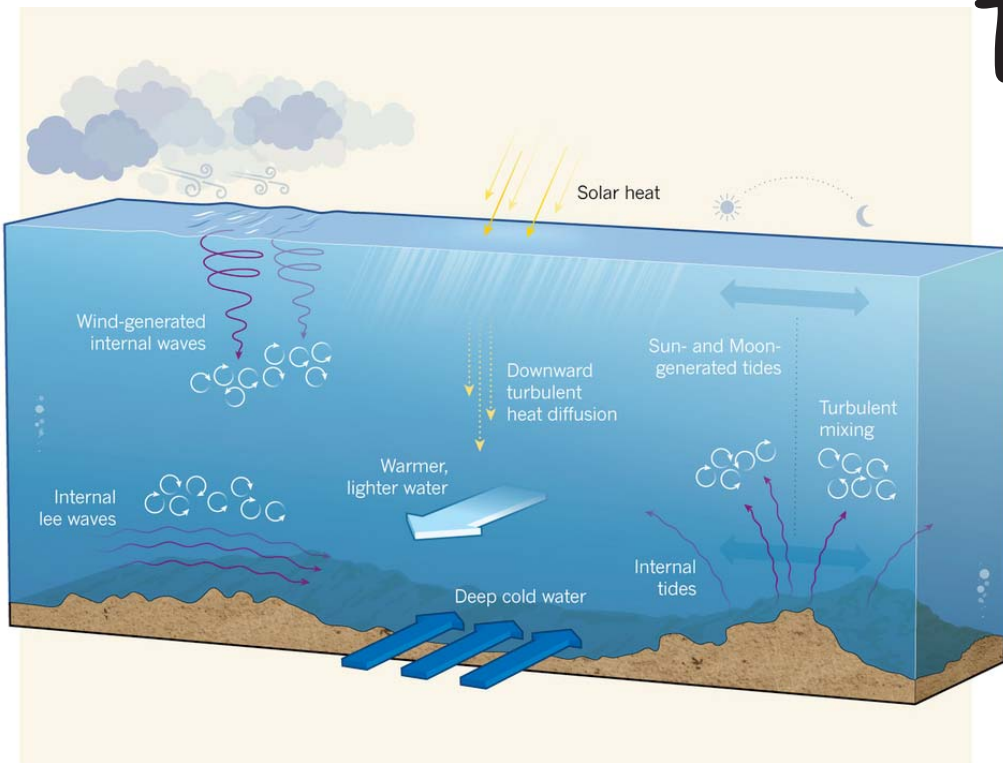
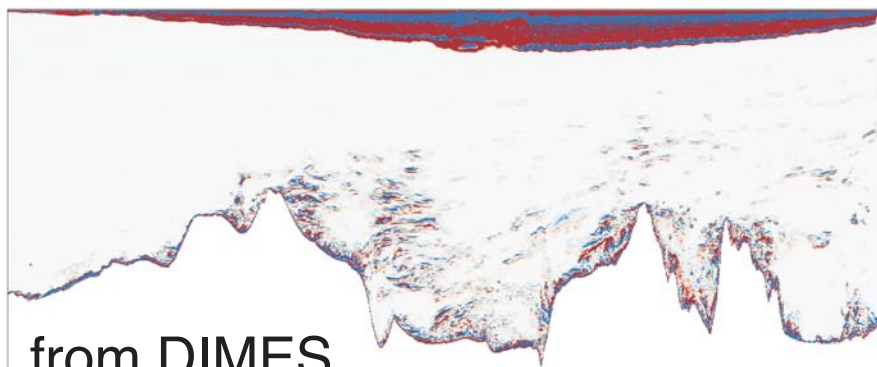


Turbulence transition from interior to boundary

Ali Mashayek, Bill Smyth & Colm Caulfield



Changes in the nature of turbulence from the ocean interior to the boundary are key in setting the patterns of upwelling responsible for bringing deep waters up and facilitating the closure of the ocean overturning circulation. This project digs deep into such transition by using a combination of theory and already available data from observations and simulations. There is potential for running new simulations if of interest.



from DICES