



MIT-WHOI Joint Program Information Session



Please Record!



Welcome

Ann Tarrant, Associate Dean

Keqi Ren, Grad. Admissions & Student Affairs
Officer

Tricia Nesti, JP Program Administrator, MIT

Program

1. Overview of JP structure
2. Funding
3. Application materials
4. What makes a strong application?
5. Waivers
6. JP ASK program
7. Breakout room Q&A

MIT-WHOI Joint Program

One doctoral degree program composed of 5 disciplines:

1. Applied Ocean Sciences and Engineering (AOSE)
2. Biological Oceanography (BO)
3. Chemical Oceanography (CO)
4. Marine Geology and Geophysics (MGG)
5. Physical Oceanography (PO)



JP Disciplines/WHOI and MIT Department Organization

Applied Ocean Science and Engineering (AOSE)

Applied Ocean Physics and Engineering (AOPE) at WHOI plus Civil and Environmental Engineering (CEE), Electrical Engineering and Computer Science (EECS), Mechanical Engineering (Mech E), or Aeronautics and Astronautics (Aero-Astro) at MIT

Biological Oceanography (BO)

Biology at WHOI plus EAPS (Earth, Atmospheric, and Planetary Sciences), CEE, or Biology at MIT

Chemical Oceanography (CO)

Marine Chemistry and Geochemistry (MC&G) at WHOI plus CEE or EAPS at MIT

Marine Geology and Geophysics (MGG)

Geology and Geophysics (G&G) at WHOI plus EAPS or CEE at MIT

Physical Oceanography (PO)

Physical Oceanography at WHOI plus EAPS at MIT

MIT-WHOI Joint Program Students

are enrolled at **both** institutions,
and have access to courses,
programs and resources at
both institutions.

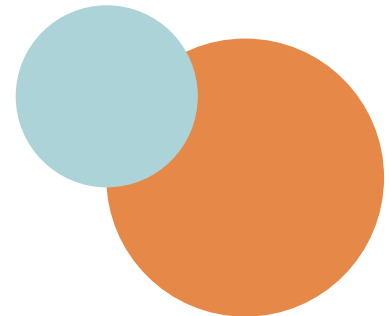
Leads to a doctoral degree awarded
by both MIT and WHOI.



Funding



- **Commitment of financial support** for 5 years of full-time study given satisfactory academic progress
- Admitted with full funding
- Consists of tuition, a stipend (at least \$49,608/yr), and health insurance for a single person
- Support may come from a Graduate Research Assistantship or fellowships
- **Encouraged to apply for external fellowships.



Extramural Fellowships



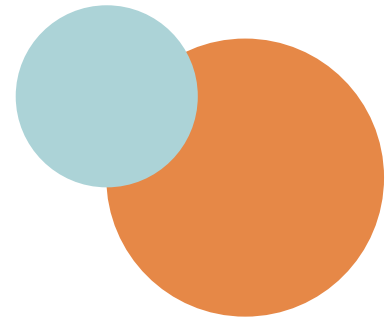
List on website: <https://mit.who.edu/admissions/funding/graduate-fellowship-opportunities/>

Deadlines coming up:

NSF GRFP: October 15-18

Oct. 15: Geosciences, Oct. 16 Life Sciences, Oct 17 Engineering

NDSEG: Typically due in late October



Application Materials

Members of groups underrepresented in STEM fields are encouraged to apply. JP students come from various STEM majors, and many are new to ocean science/engineering.

1. Undergrad degree
2. Unofficial transcript(s)
3. Describe grading system
4. English Language Proficiency exam (either IELTS or TOEFL)

Required for applicants who have not received primary or secondary schooling in English

- *TOEFL minimum 100*
- *IELTS minimum 7.0*
- *Cambridge English*

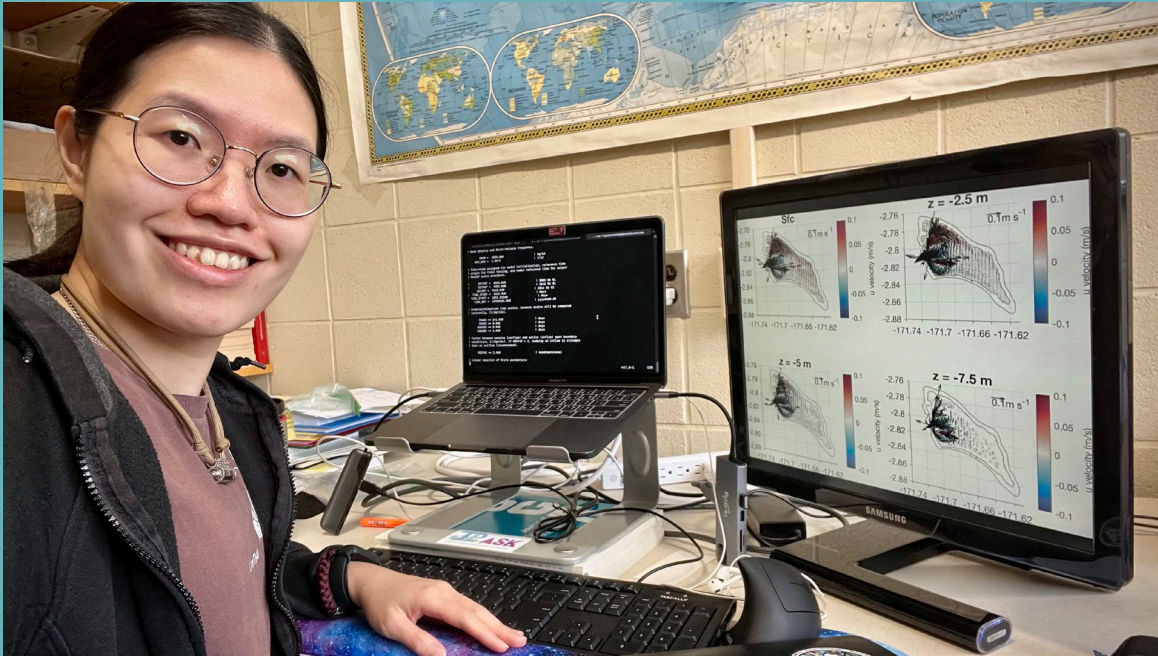
5. Statement of objectives
 - 1.5-2.5 pages single-spaced
 - why you are a good candidate
 - what you would like to study and how your previous training and experiences have prepared you for that work
 - specific faculty whose research most interests you
 - factors that may have impacted your performance or opportunities to gain experience

6. Three letters of recommendation
 - Letters should be from people who are familiar with your academic and/or research capabilities
7. Optional GRE scores (*not required*)

***APPLICATION OPENS OCTOBER 2024**

What Makes a Strong Application?

1. No single factor, holistic admissions process
2. Clear statement of the type of research the student envisions doing and how their background provides a foundation
3. Potential match with a research advisor
4. External fellowships
5. Highlights the applicant's strengths and potentially describes challenges that have been overcome





Application Fee Waivers

For U.S. Citizens and U.S. Permanent Residents

- who demonstrate financial hardship,
- are current or former members of the U.S. Armed Forces, or
- who have participated in special fellowship programs, including MIT-sponsored diversity programs

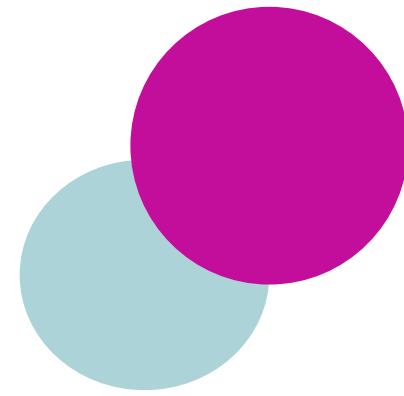
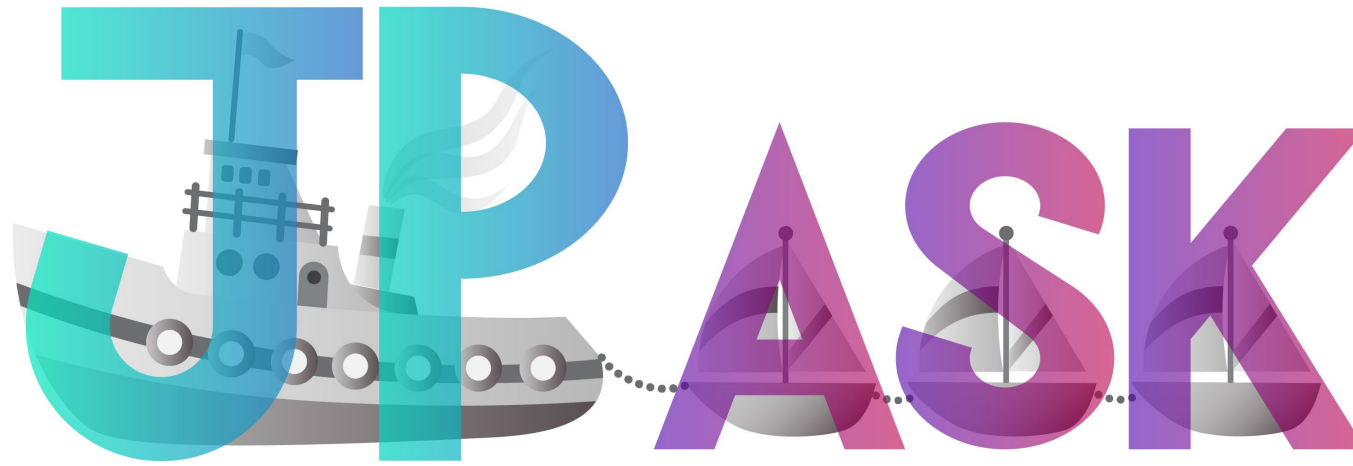
Eligible applicants should submit the fee waiver form

TOEFL/IELTS Waivers

1. Primary language was English during primary and secondary schooling or
 - attended a 4-year English-speaking college/university in U.S., Canada, or Europe and
 - graduated with a bachelor's degree may be eligible

A two or three-year Master's degree in a U.S. or English-speaking university is not considered sufficient to qualify for a waiver.

Submit the request through the online application system



MIT-WHOI JOINT PROGRAM APPLICANT SUPPORT & KNOWLEDGEBASE



Advise and support prospective students through the graduate application process by pairing prospective applicant mentees with current graduate student mentors



PROGRAM RUNS:
SEPTEMBER 1 TO
DECEMBER 1



SIGN-UP:
[HTTPS://FORMS.G
LE/UZYQFEOESRZI
KSAC8](https://forms.gle/UZYQFEOESRZIKSAC8)



WEBSITE:
[HTTPS://MIT.WHOI.E
DU/ADMISSIONS/AP
PLY/JP-APPLICANT-
SERVICE-
KNOWLEDGEBASE-
JP-ASK/](https://mit.who.edu/admissions/apply/jp-applicant-service-knowledgebase-jp-ask/)



**QUESTIONS
CONTACT:**
JP-ASK@MIT.EDU

Thank you for joining us!

Questions:

Try our FAQ page:

<https://mit.whoi.edu/admissions/faqs/>

Or write: mit-who-www@mit.edu

Application Opens October 2024

Deadline (TBD) December 2024

