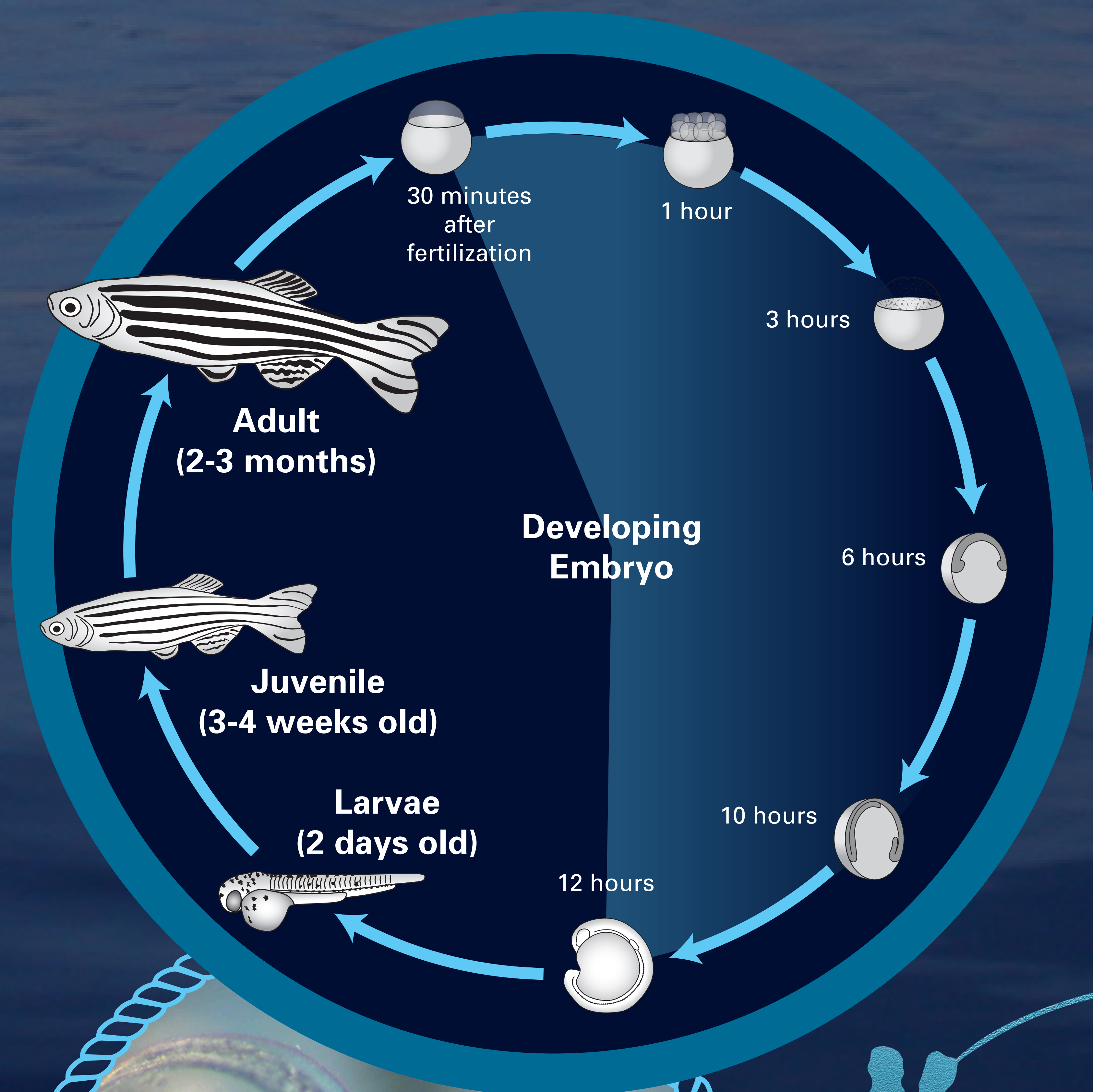


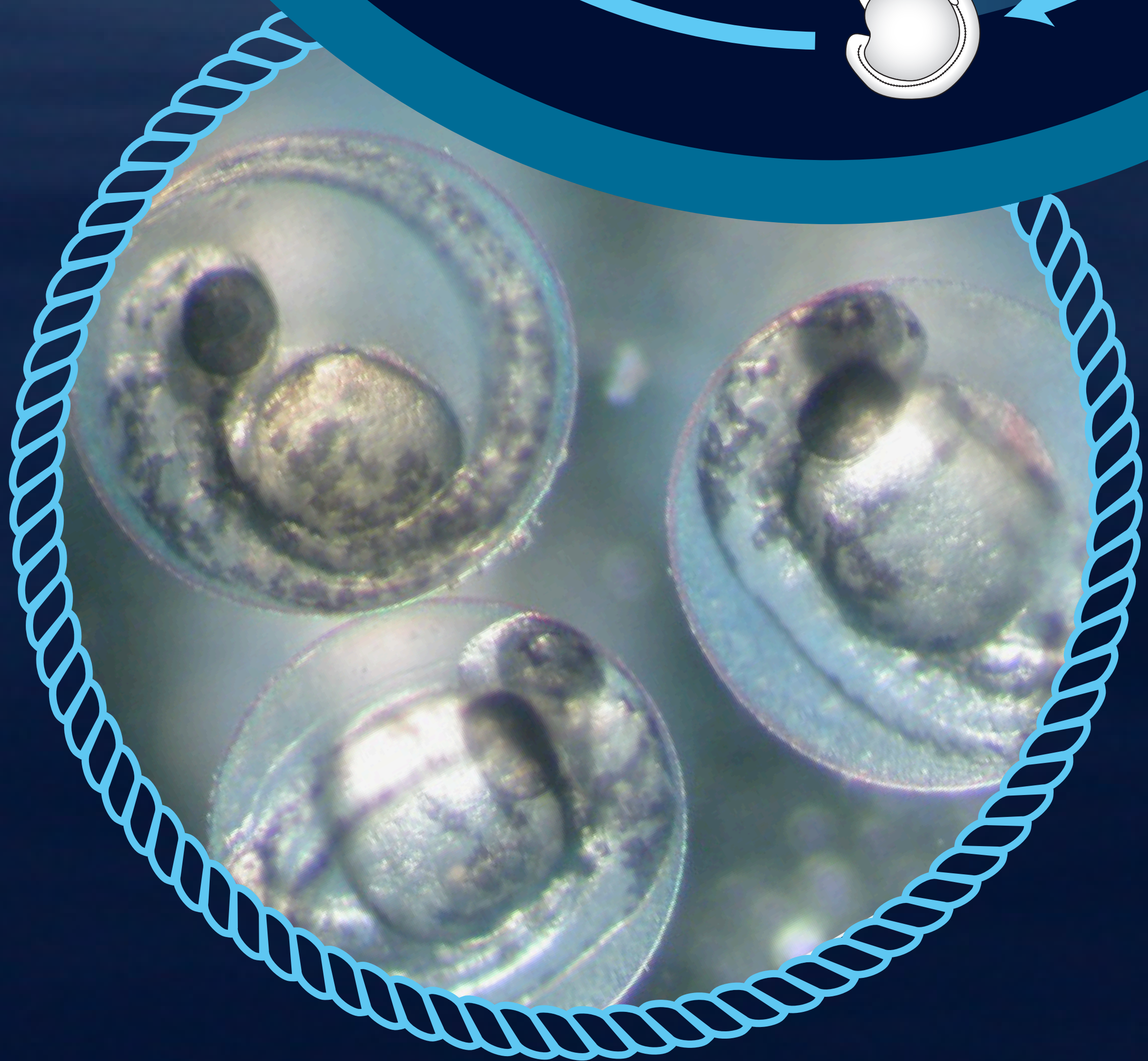
Zebrafish

as a model for oceanic
and environmental
health research



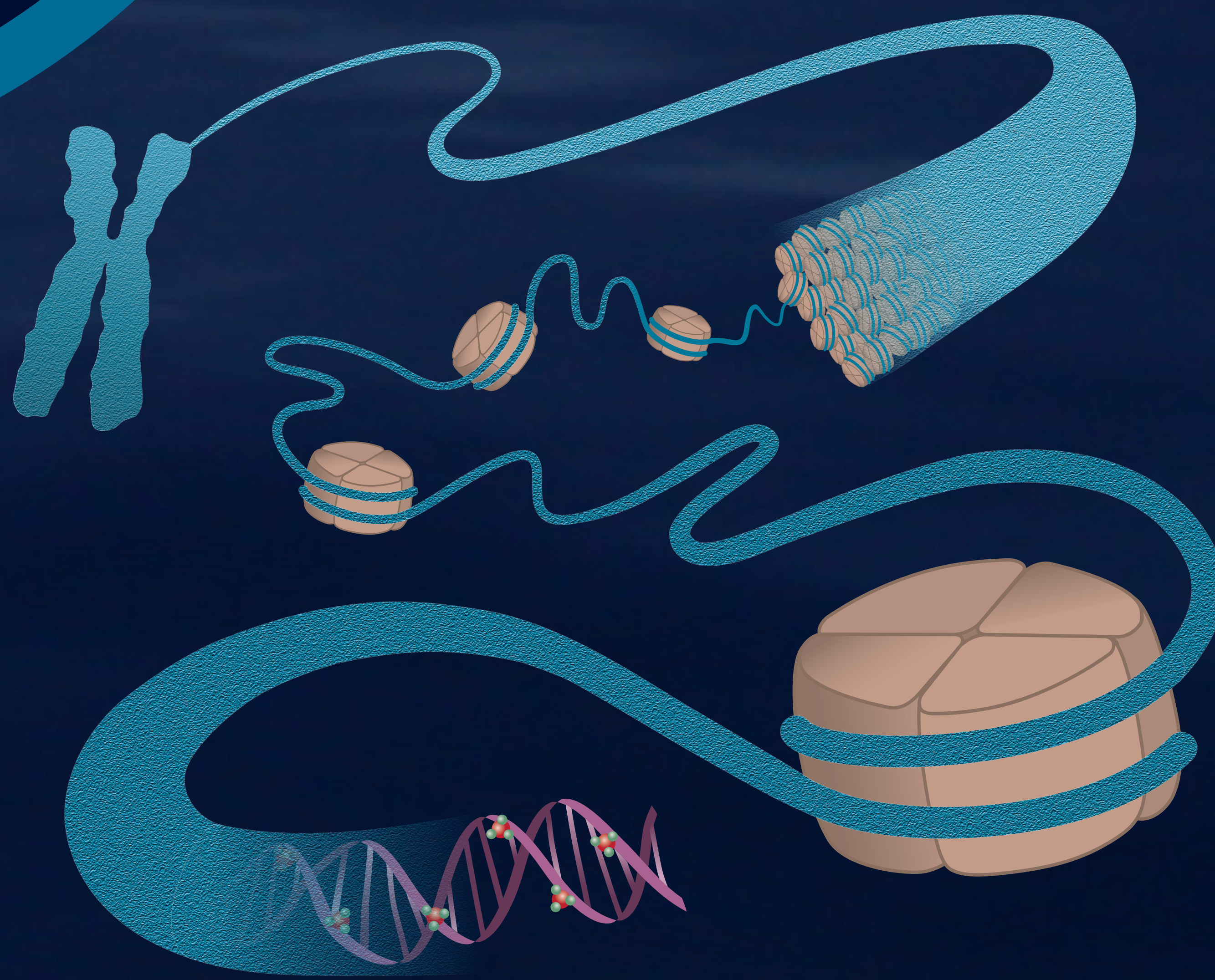
Zebrafish as a biomedical model

Zebrafish are remarkably similar to humans and share the majority of the same genes, making them an important model for understanding human health. Ongoing research at Woods Hole Center for Oceans and Human Health is aimed at understanding the long-term effects of harmful algal bloom toxins and marine pollutants.



Zebrafish as sentinels of aquatic pollution

Zebrafish are prolific breeders and lay large number of eggs. We use zebrafish embryos to understand the effects of pollution on development and growth.



Zebrafish are highly amenable for genetic research

Transparent embryos and external development makes it easy to introduce foreign DNA into the embryos. We are using these approaches to study the function of genes involved in pollutant responses.