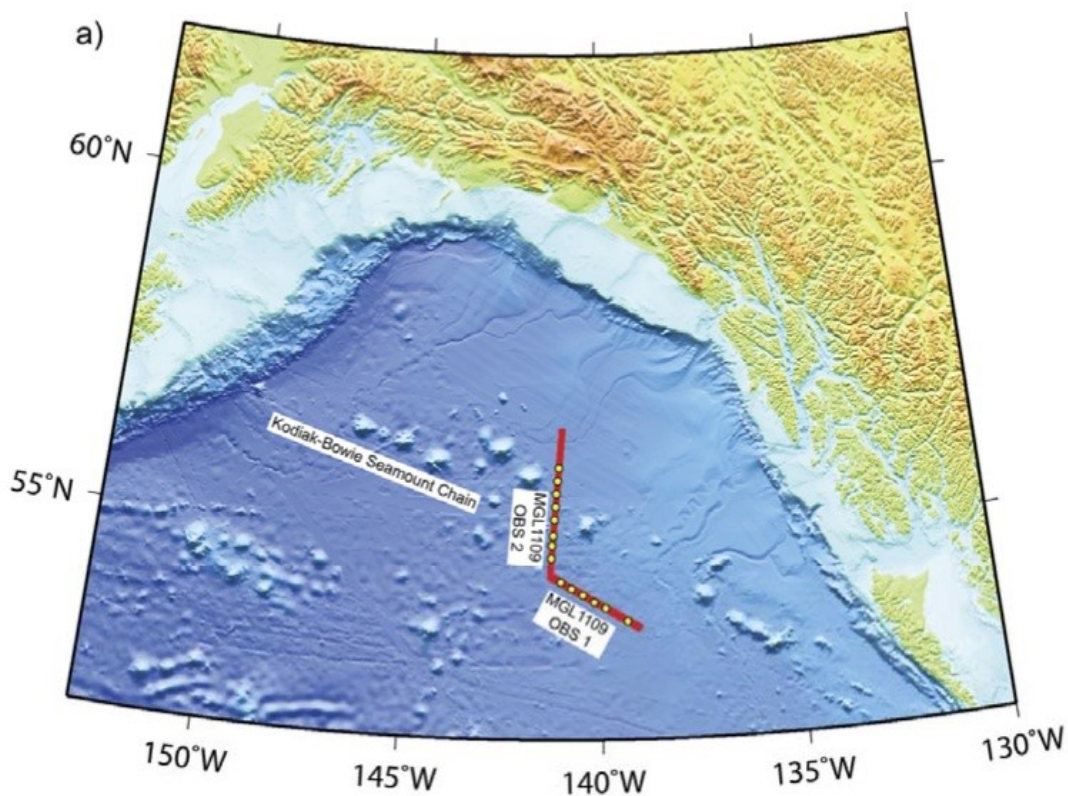


OBSIP Experiment Archive

Year:	2011
Experiment Name:	Gulf of Alaska (GoAlaska)
Principal Investigator(s):	Gail Christeson (UTIG)

Experiment Summary: (Taken from the cruise report): Profiles OBS01 and OBS02 are located over sedimented 22-28 Ma oceanic crust in the Gulf of Alaska. Primary features observed in the bathymetry and magnetics (Fig. 2) are the Kodiak-Bowie seamount chain, the Aja fracture zone, and a disruption in the magnetics which is identified by Atwater and Severinghaus [1989] as a small wandering offset. Profile OBS01 is located near the trace of the small wandering offset; profile OBS02 crosses the Aja fracture zone and the Kodiak-Bowie seamount chain.



Map of planned survey (red lines),
offshore short period seismic deployment (yellow circles)

Continued Next Page

OBSIP Experiment Archive

...Continued

Year:	2011
Experiment Name:	Gulf of Alaska (GoAlaska)
Principal Investigator(s):	Gail Christeson (UTIG)

Cruises:

6/16/2011 - 6/22/2011:

14 WHOI ocean-bottom seismometers were deployed in two lines of 7 instruments on board the R/V Langseth. One OBS was not recovered.

Data:

Data from the ocean bottom seismometers will be archived at the IRIS DMC under temporary network code [1B](#) (2011) and assembled data set ID [11-017](#).

Downloads/Links:

None.