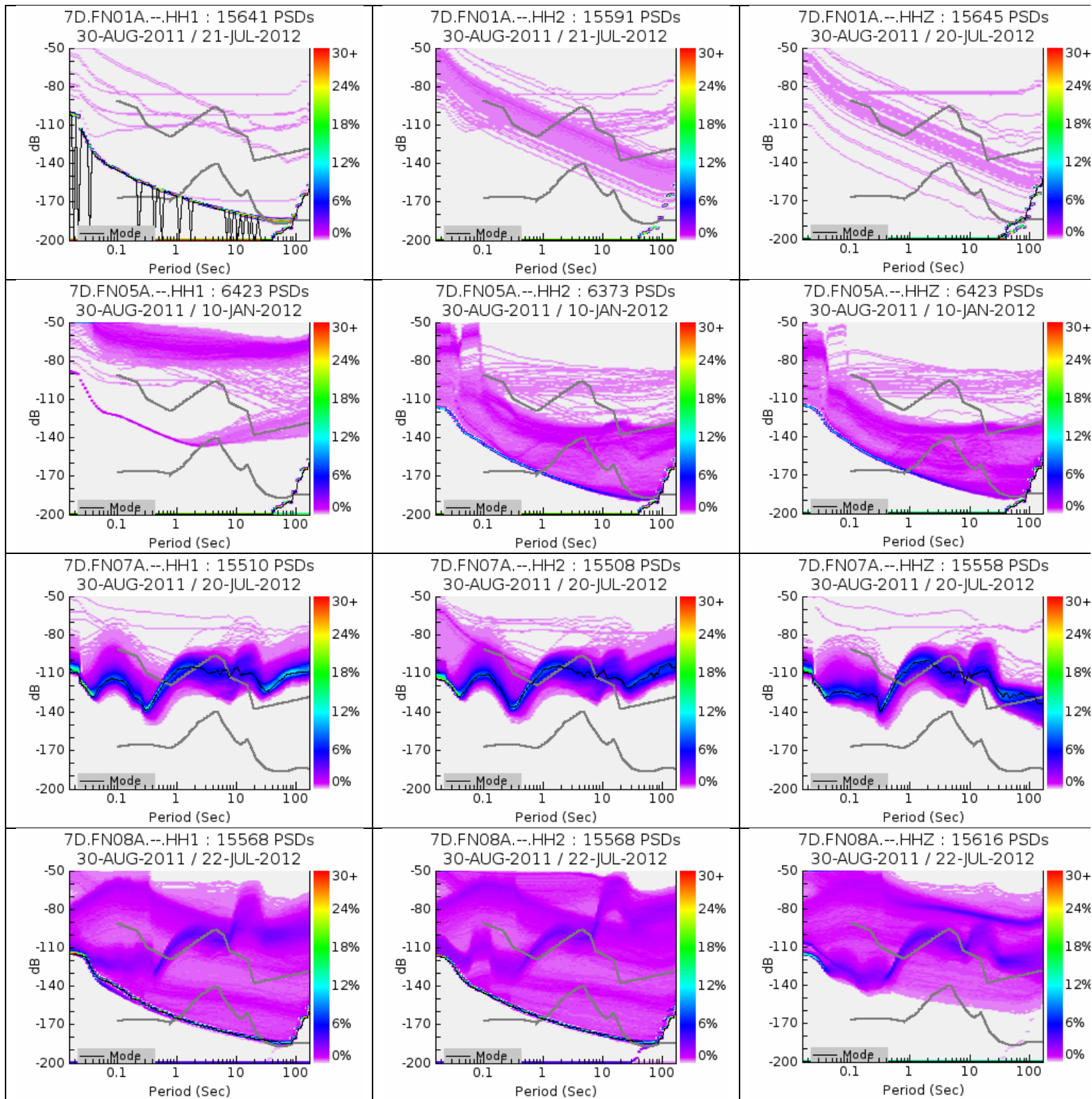
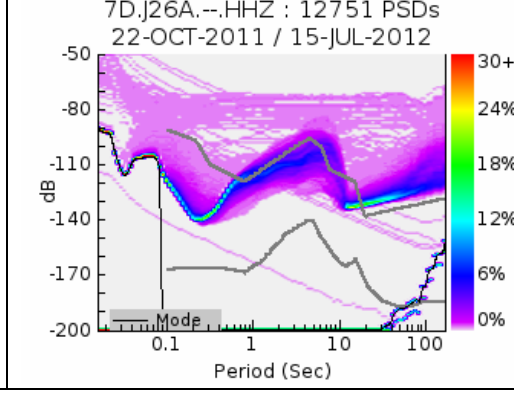
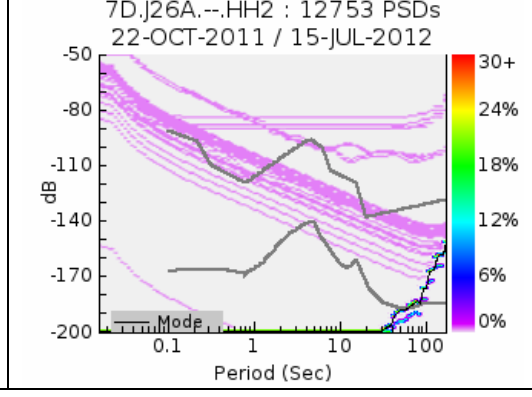
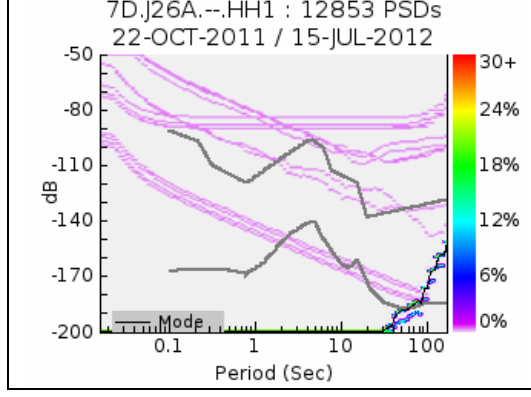
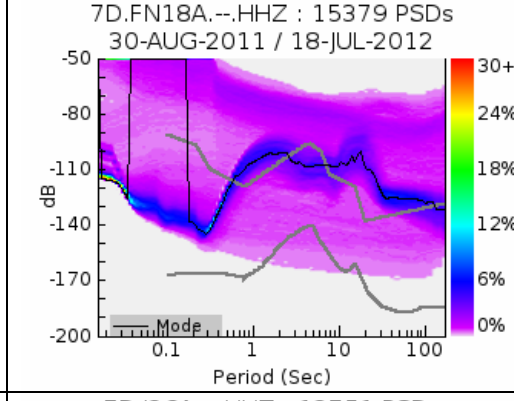
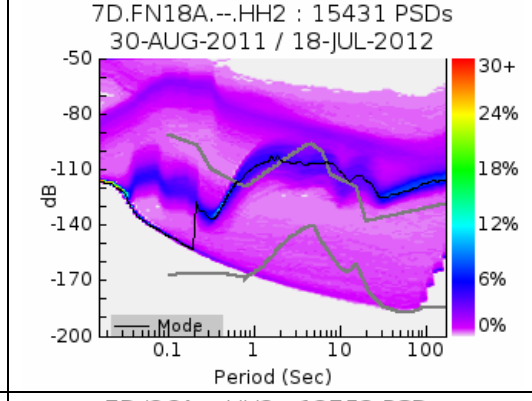
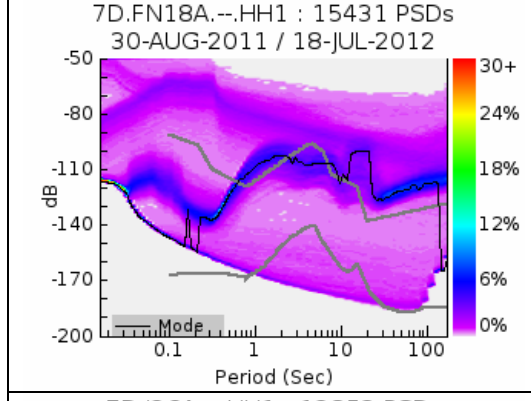
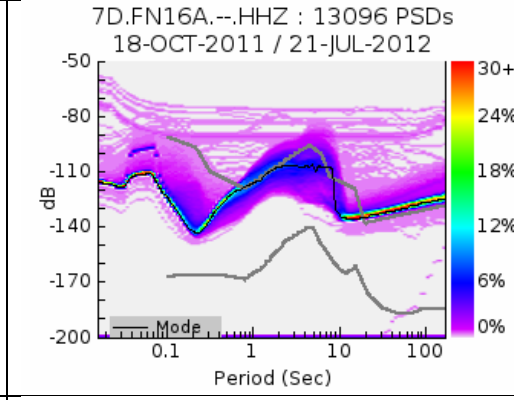
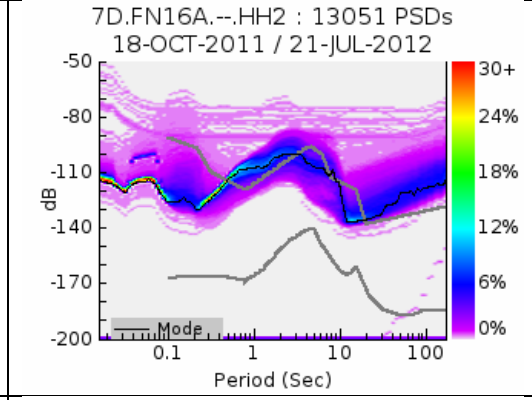
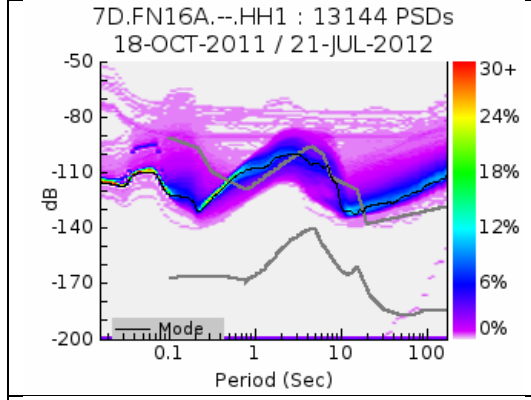
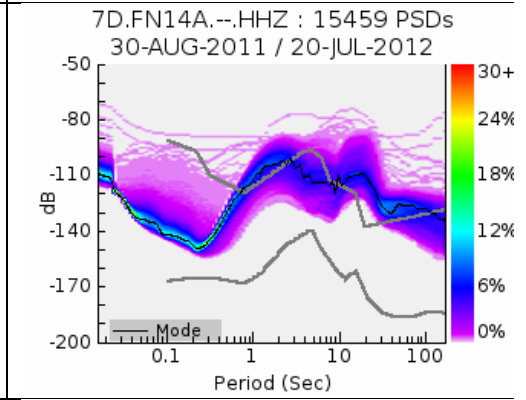
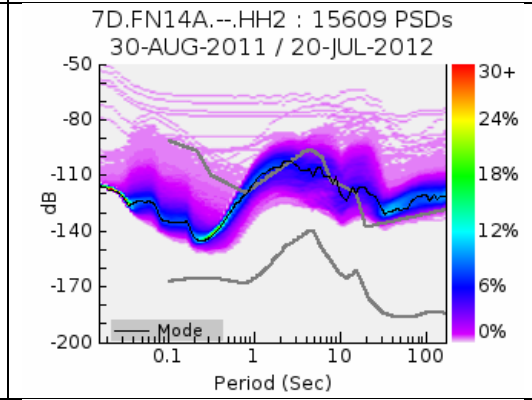
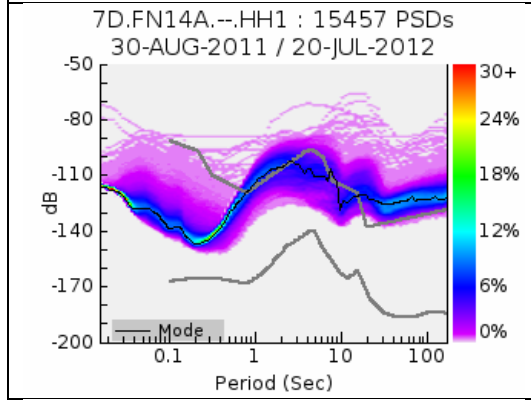
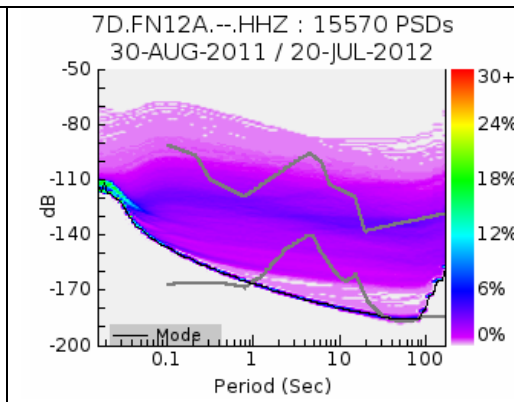
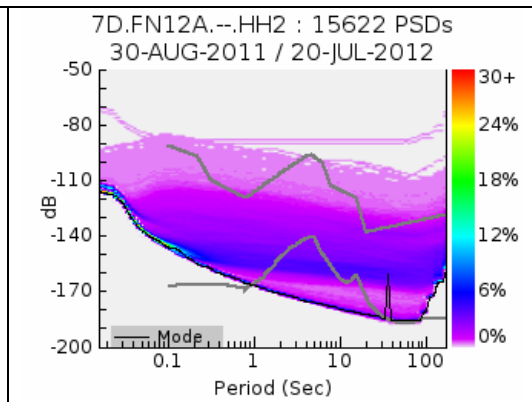
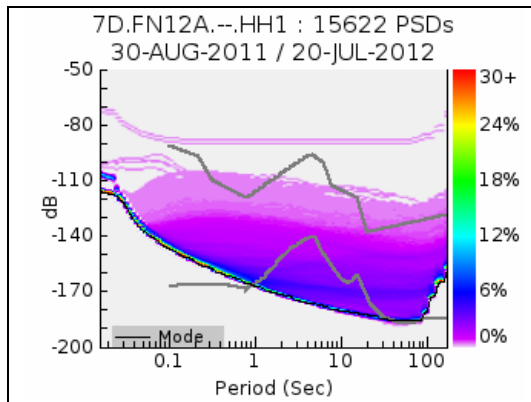
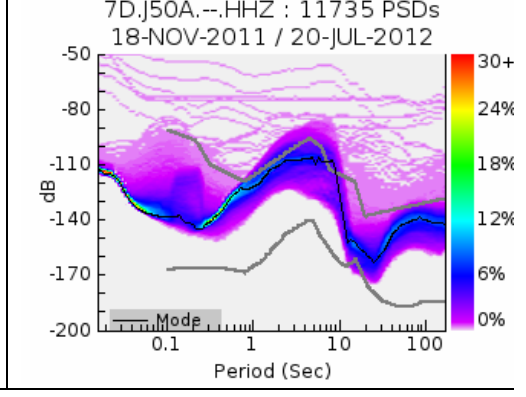
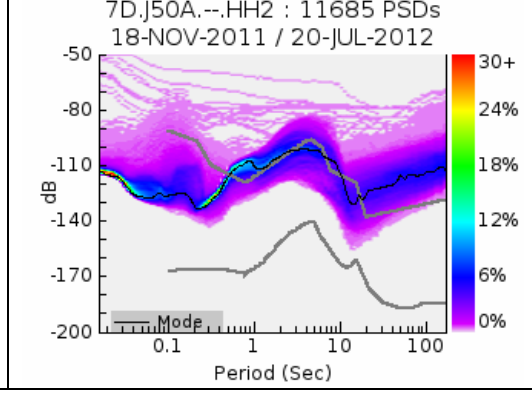
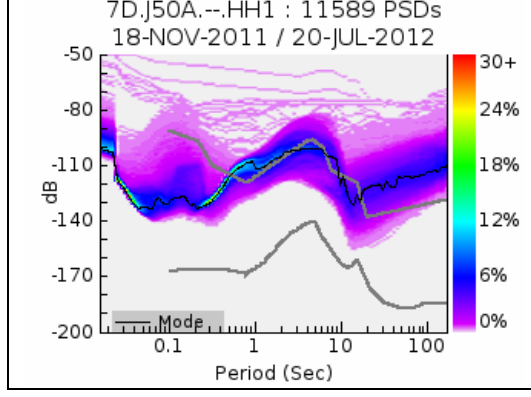
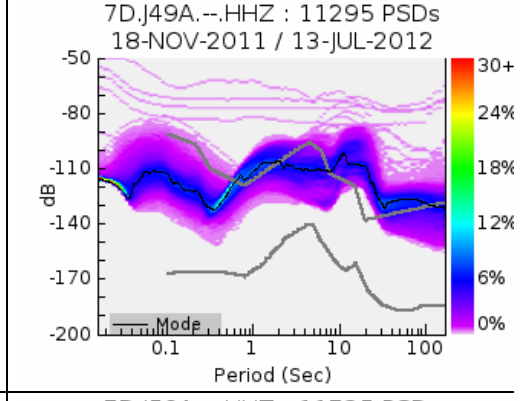
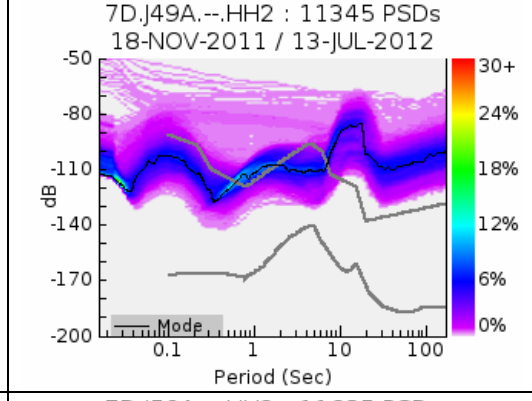
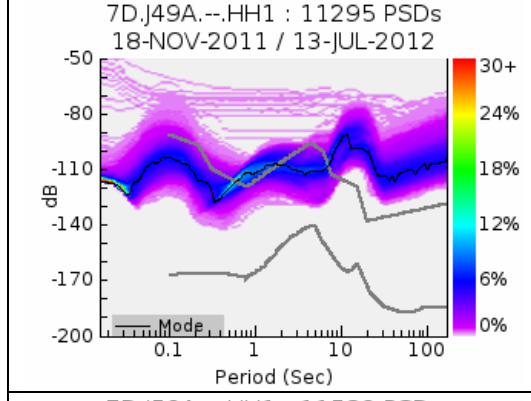
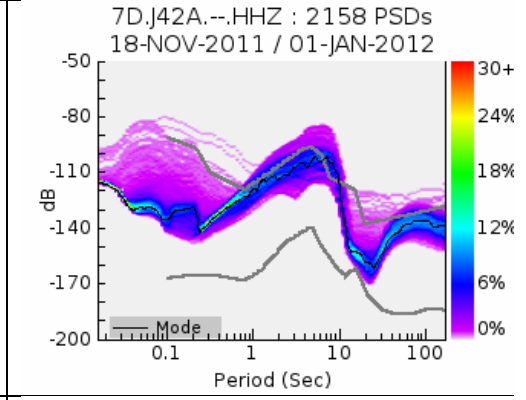
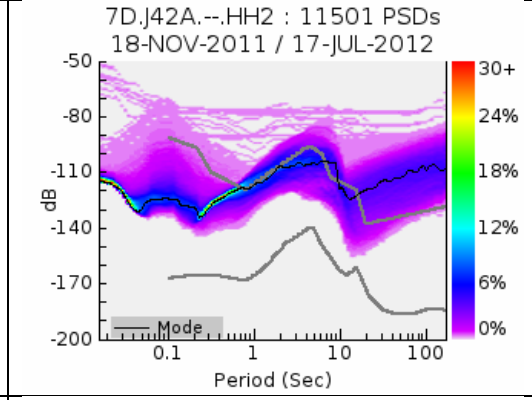
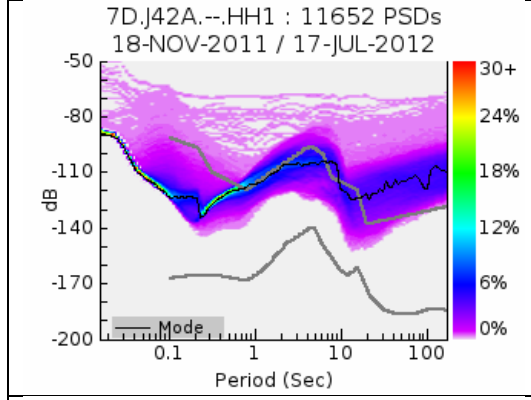
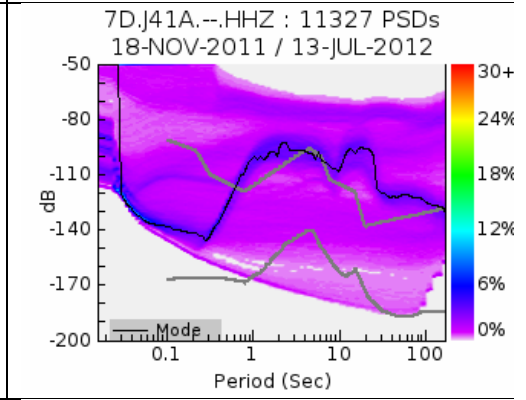
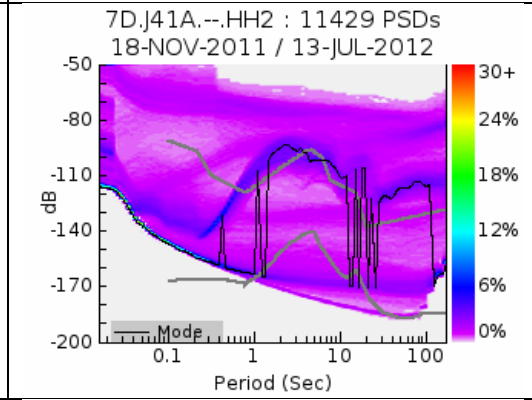
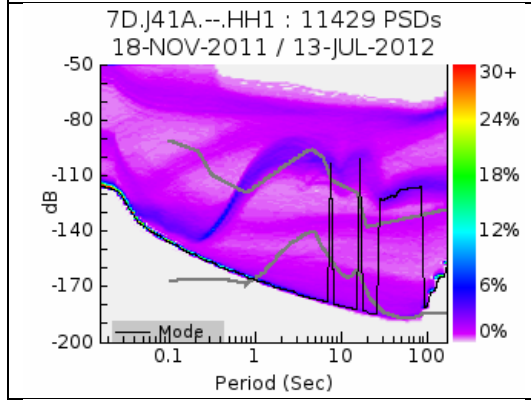
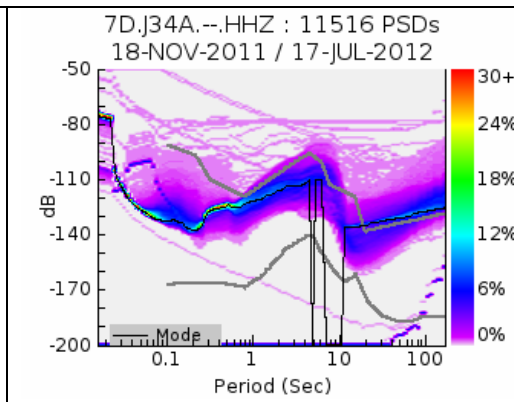
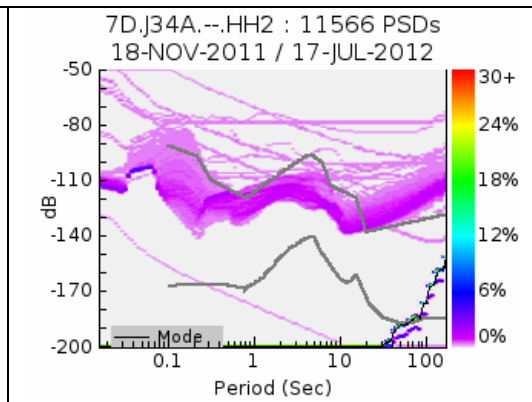
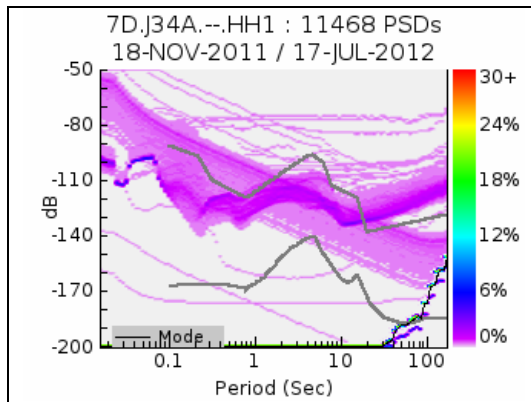


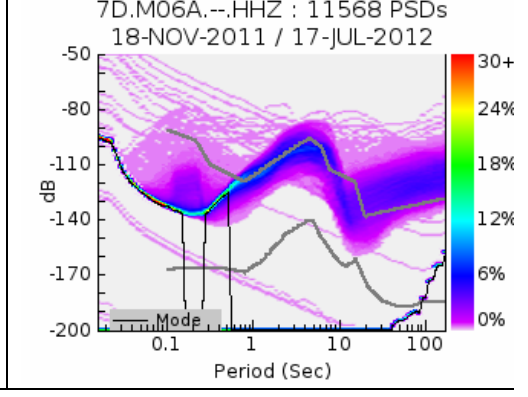
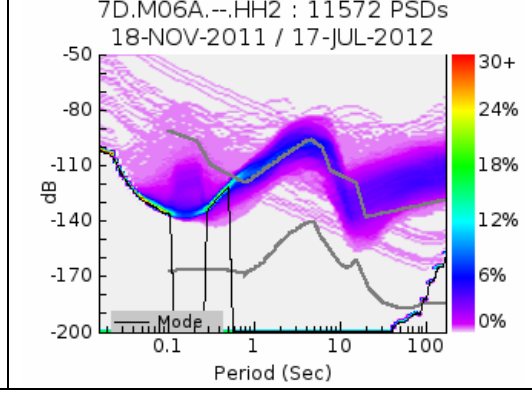
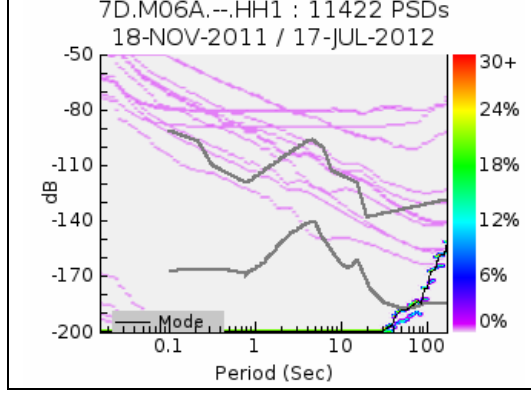
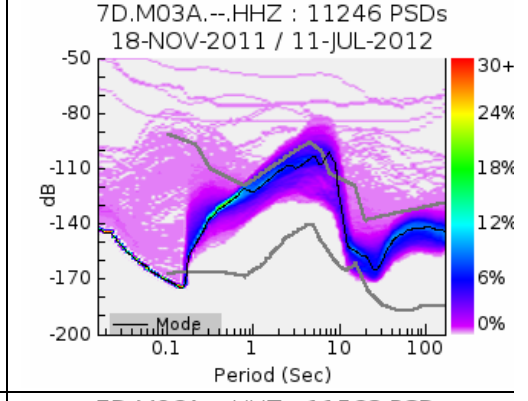
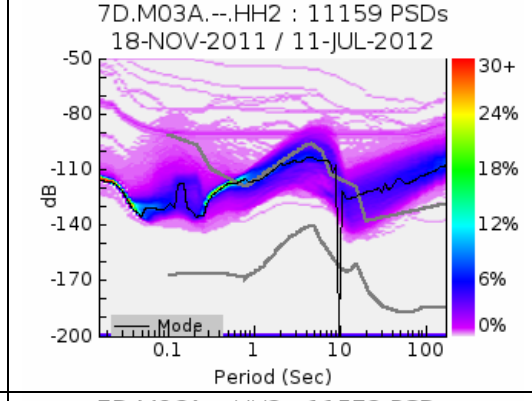
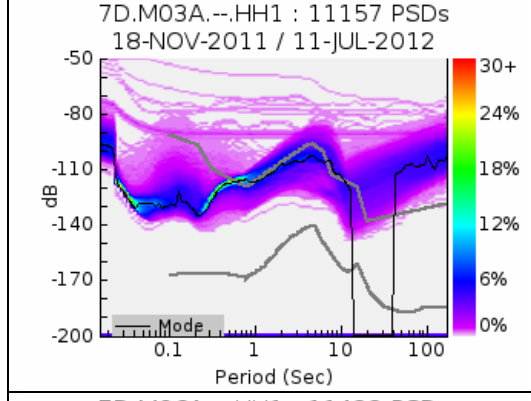
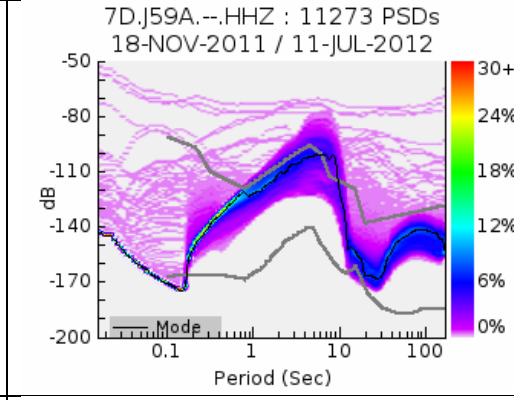
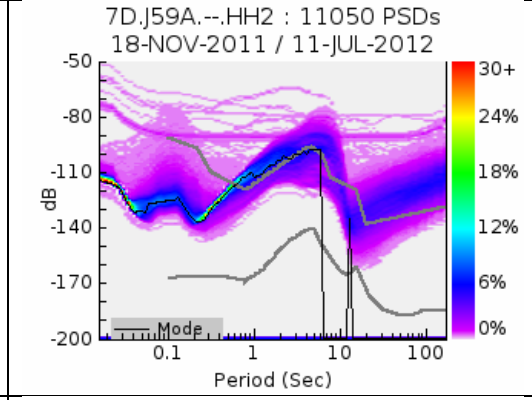
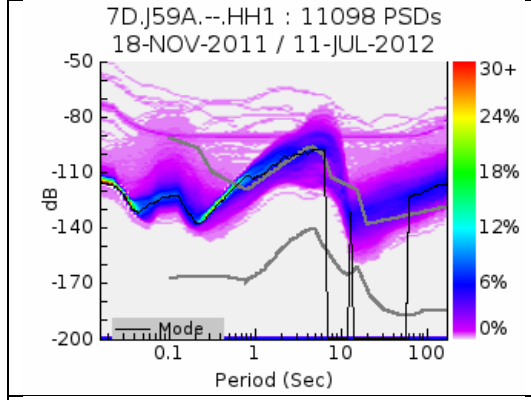
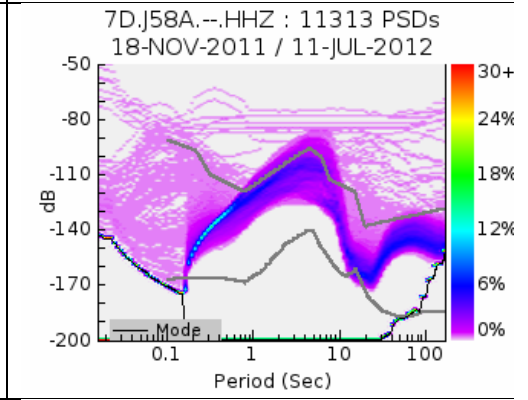
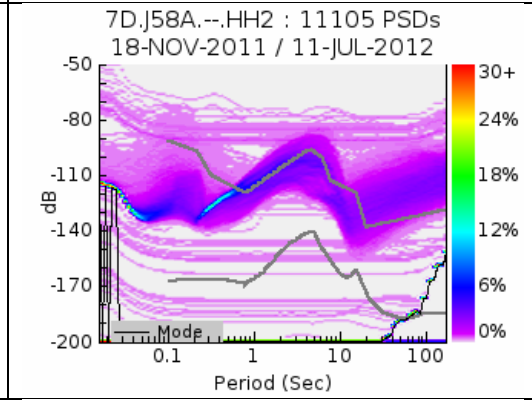
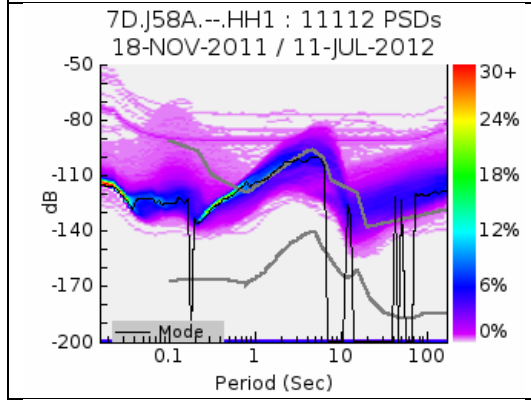
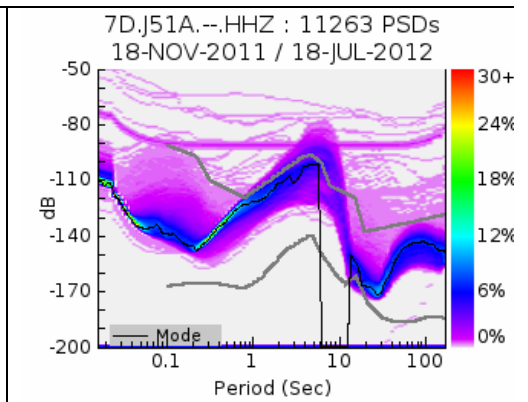
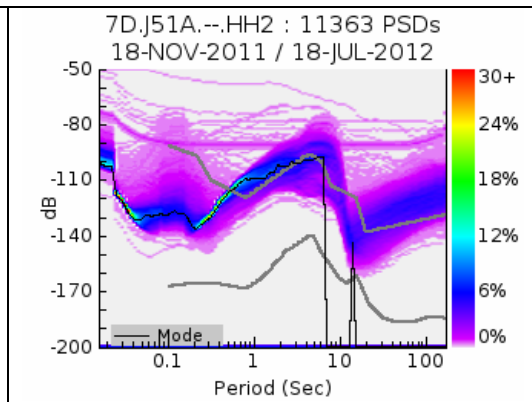
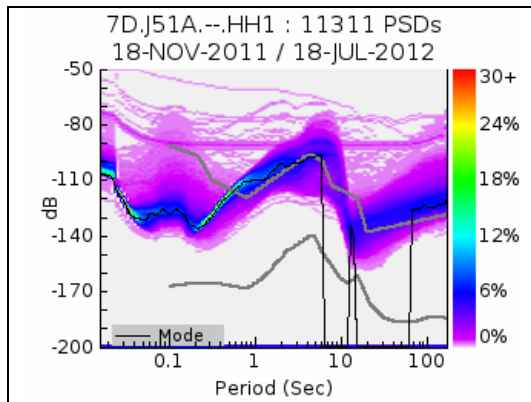
Appendix C (LDEO): Probability density function plots of power spectral density calculations for 2011-2012 LDEO stations. Each row represents two unoriented horizontal channels and one vertical channel for each seismometer. To eliminate noise from the initial settling of the instrument following emplacement, the plots only include data recorded one month after the date the instrument was deployed.



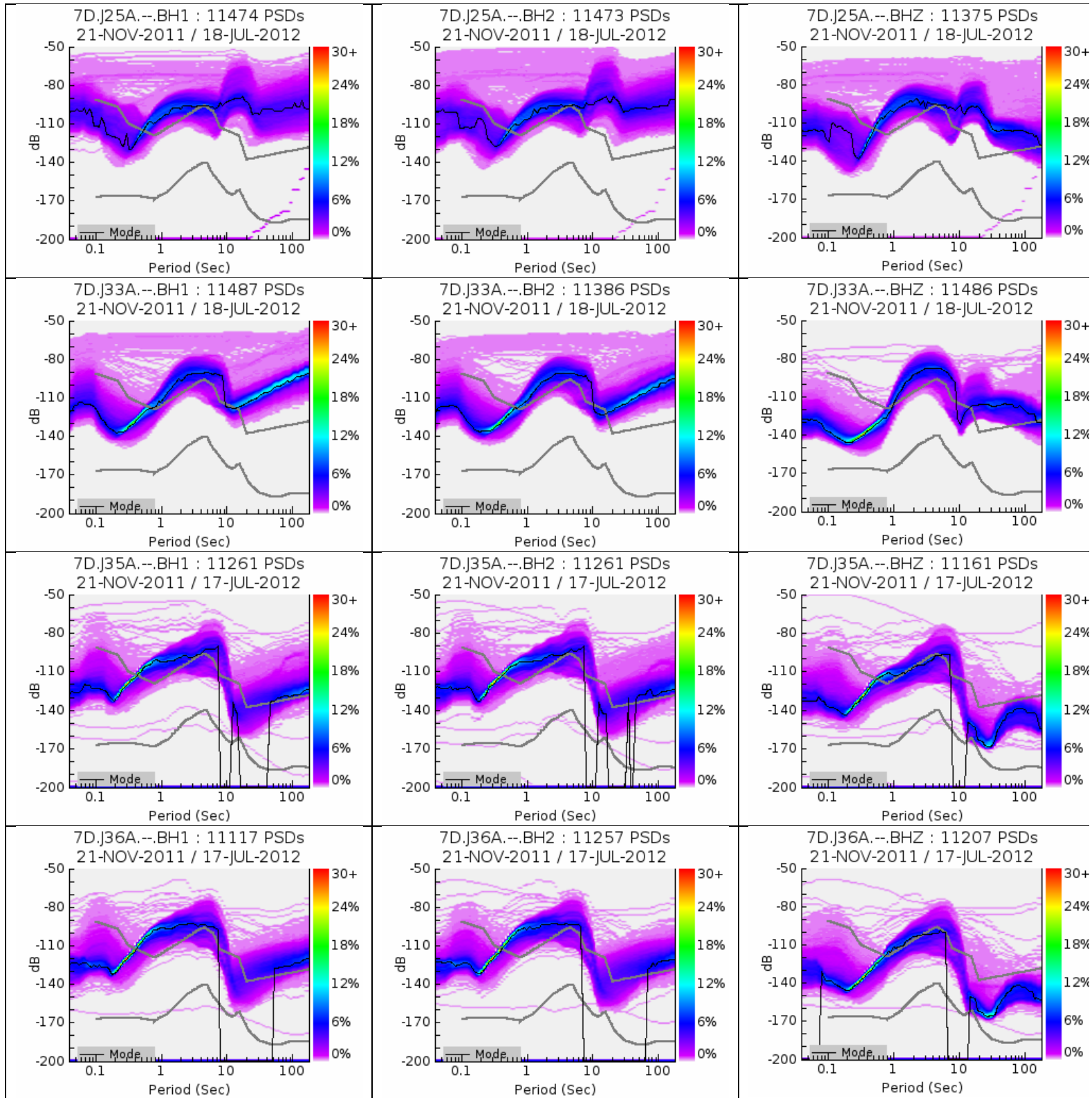


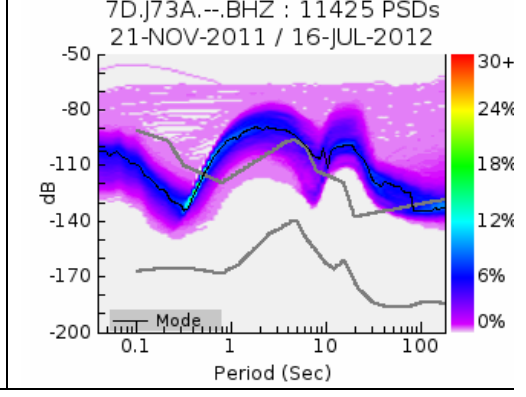
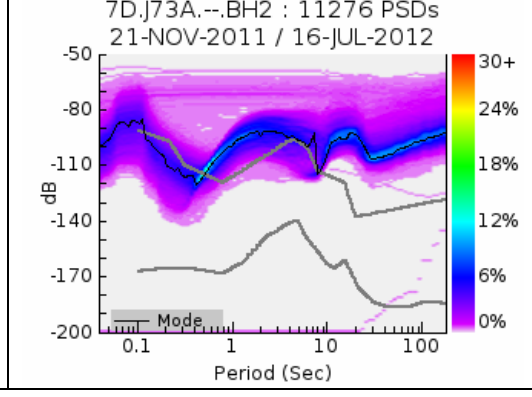
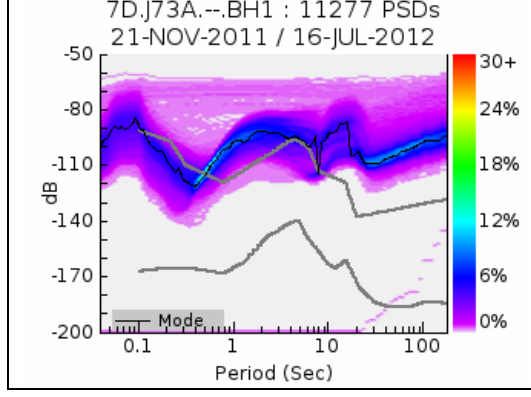
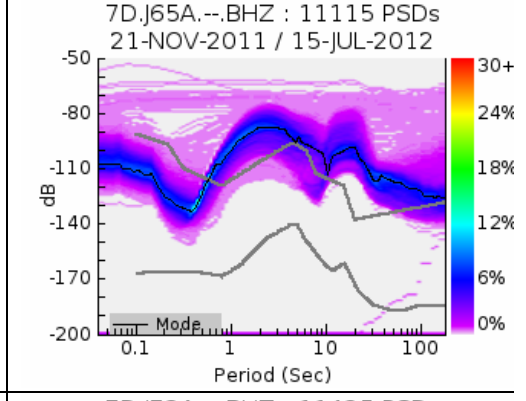
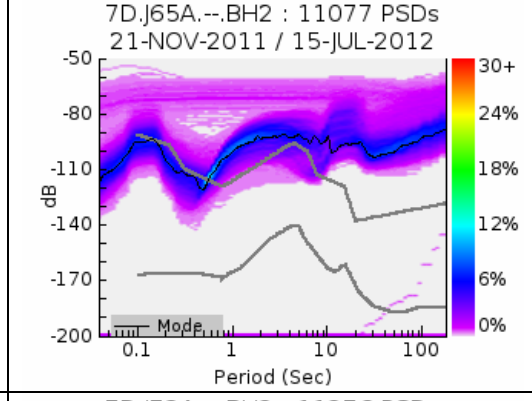
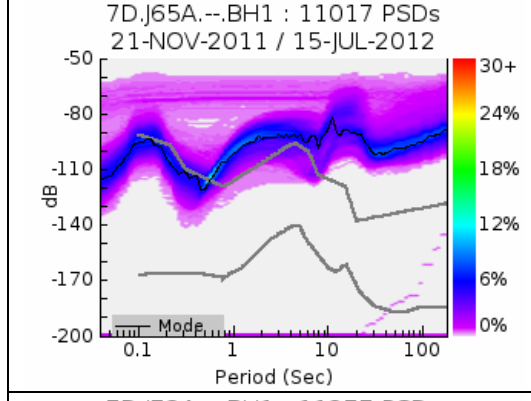
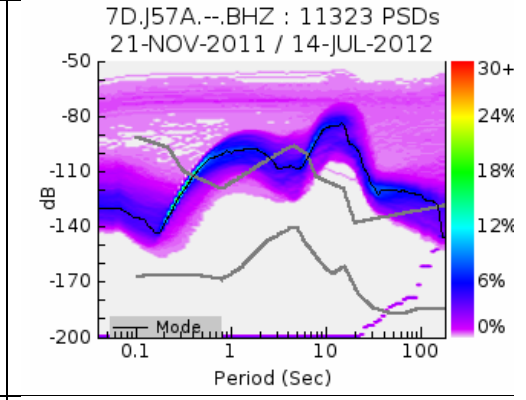
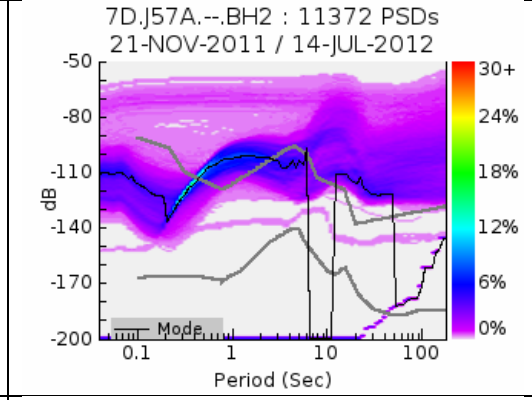
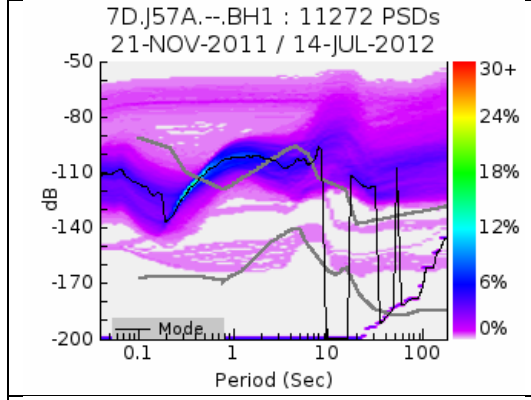
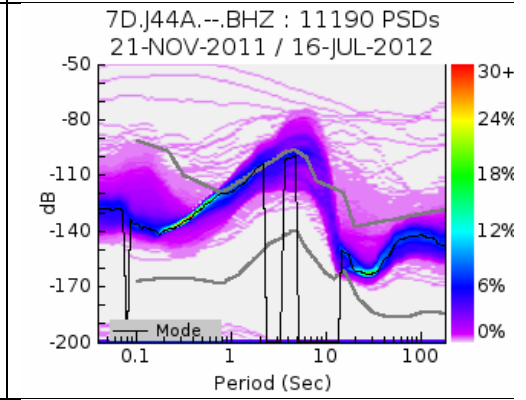
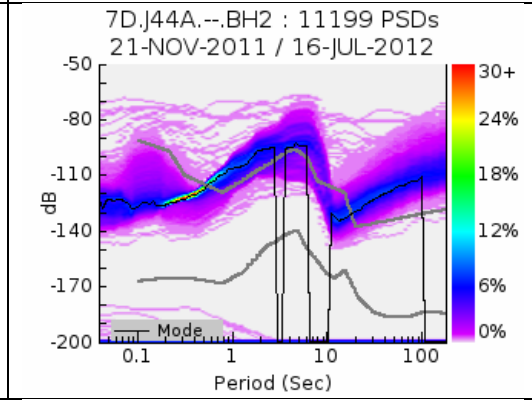
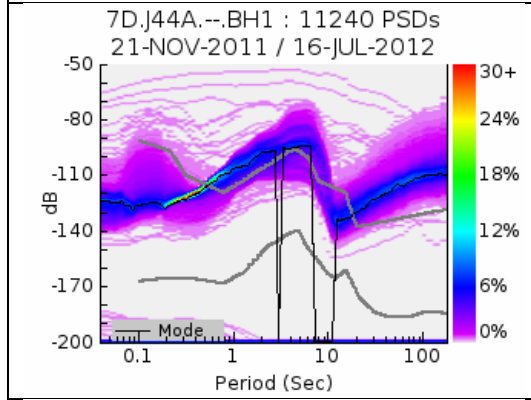
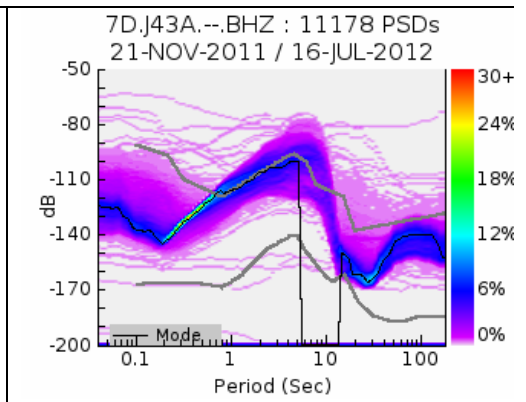
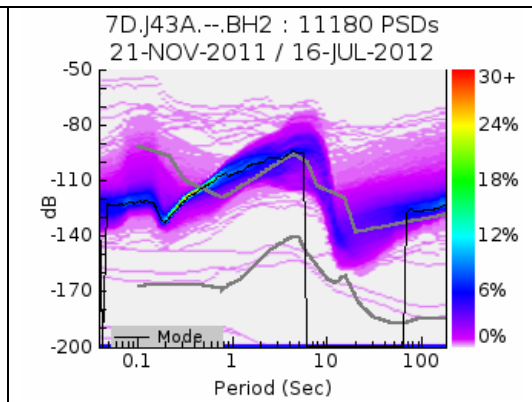
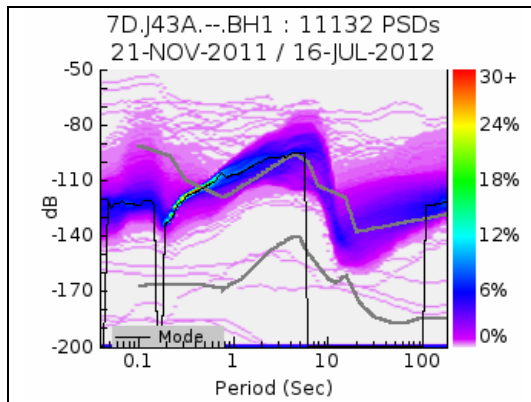




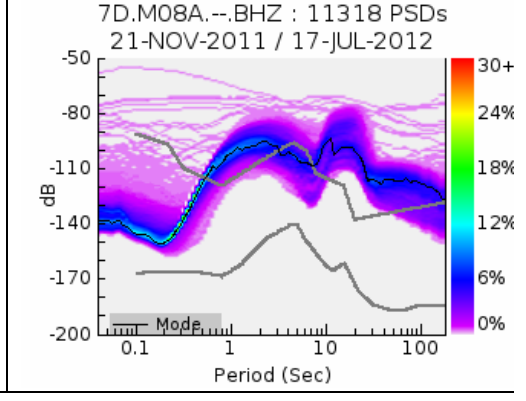
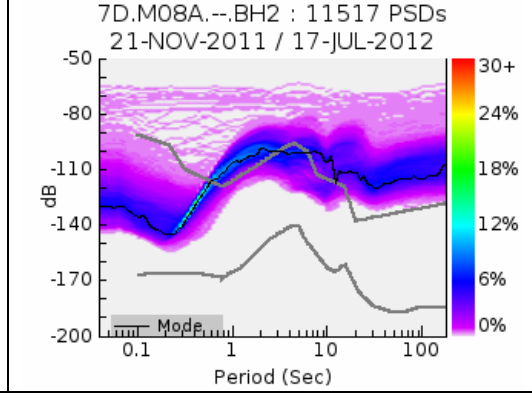
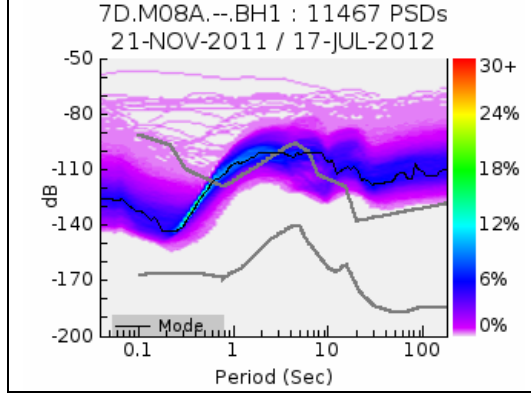
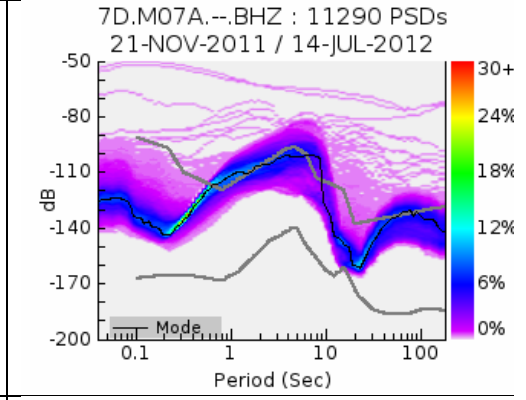
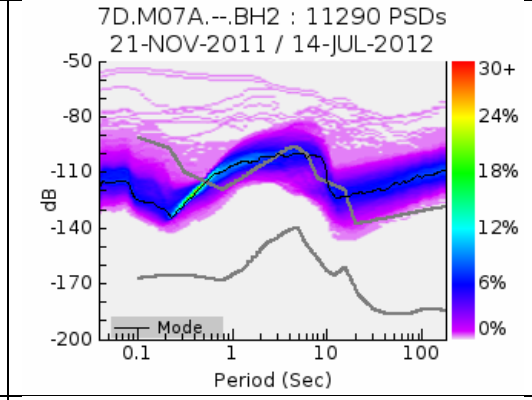
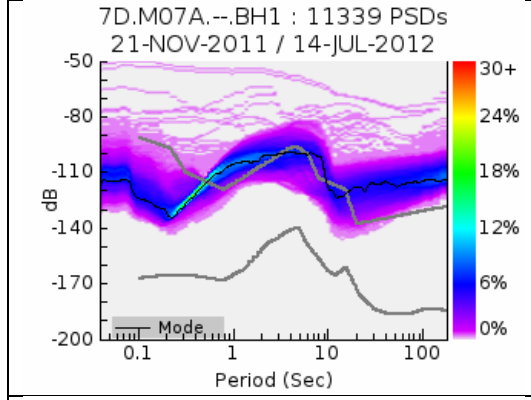
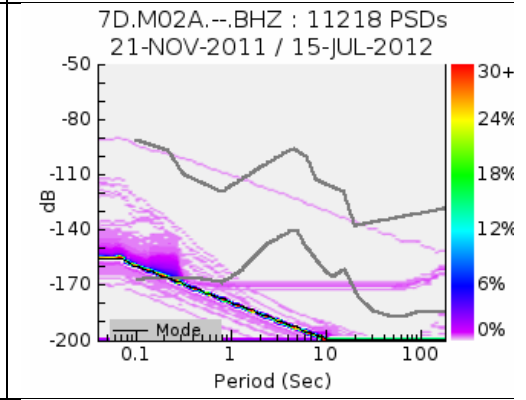
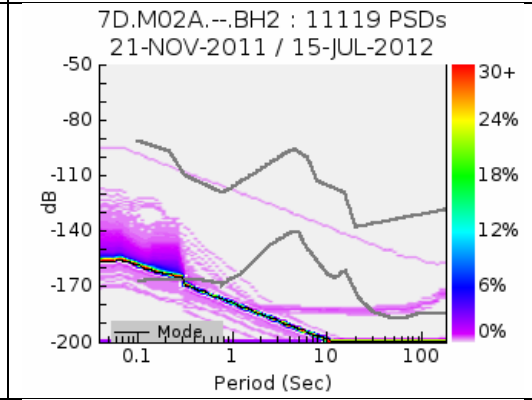
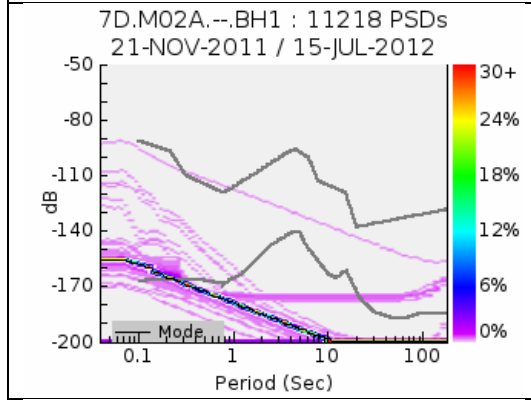
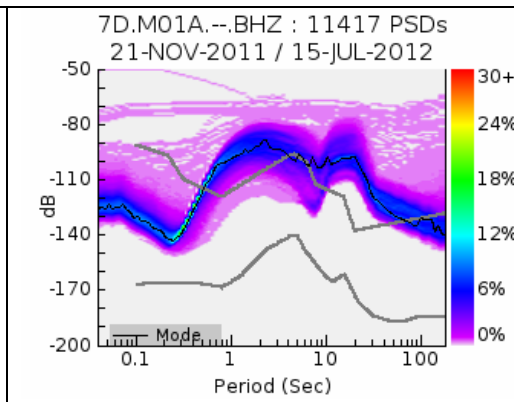
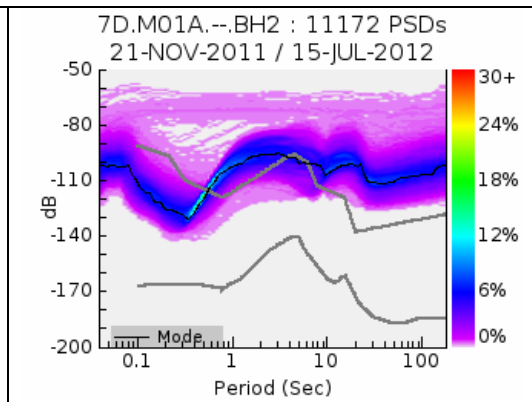
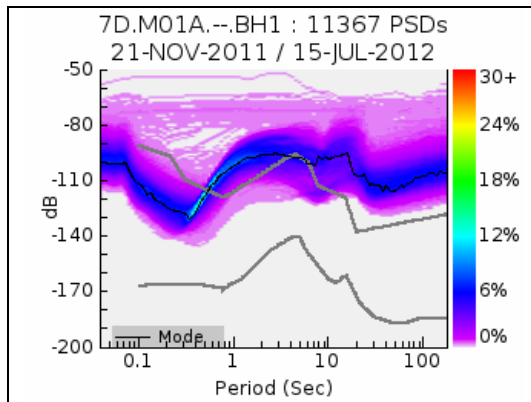


Appendix C (SIO): Probability density function plots of power spectral density calculations for Year 1 SIO stations. Each row represents two unoriented horizontal channels and one vertical channel for each seismometer. To eliminate noise from the initial settling of the instrument following emplacement, the plots only include data recorded after 11/21/2011.









Appendix C (WHOI): Probability density function plots of power spectral density calculations for 2011-2012 WHOI stations. Each row represents two unoriented horizontal channels and one vertical channel for each seismometer. To eliminate noise from the initial settling of the instrument following emplacement, the plots only include data recorded after 12/1/2011.

